
vesperm^{ar}ine

smartAIS™

It could save your life



SAFETY UNDERWAY

Collision Prevention



SAFETY AT ANCHOR

Anchor Watch



SAFETY FOR YOUR CREW

Man Overboard

WatchMate
smartAIS™ Transponders

INTRODUCTION TO *smartAIS*

WHAT IS AIS?

The Universal Shipborne Automatic Identification System (AIS) is a system of transponders installed on vessels which transmit over two dedicated digital marine VHF channels.

The AIS data is sent from each vessel every few seconds and contains position and movement information such as course, speed, latitude, longitude, and heading. Static information about the vessel is sent every few minutes and includes the name, type of vessel, length, beam, draft, etc. Nearly all commercial ships are mandated to carry AIS transponders and each year more sail, power and work boats are fitting AIS equipment.

An AIS transponder sends AIS signals, making your vessel visible to others with AIS equipment, and receives and translates the AIS signals for critical safety information. Your safety is enhanced day and night, when offshore or in busy marine traffic areas or in bad weather when visibility is reduced. AIS devices are also fitted on Aids to Navigation and as portable man overboard (MOB) devices on individuals for visibility to all AIS equipped vessels.

WHAT IS *smartAIS*?

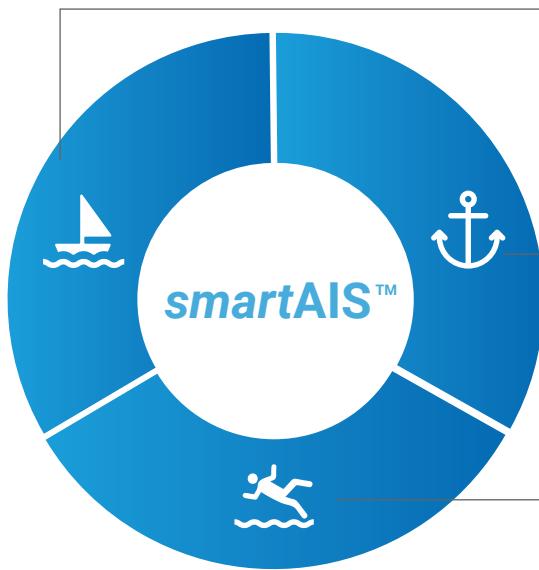
Reinventing the future of AIS.

Unlike an ordinary AIS which only sends and receives data, *smartAIS* from Vesper Marine is an active AIS system with smart alarm logic that proactively alerts you when you have potential collision situations. It plots your anchor position and alerts you if your anchor drags. It continuously watches for a man overboard and triggers an alarm for quick action.

smartAIS puts you in control of every situation, furnishing you with navigation sensor data, GPS and AIS information. Its intelligent alarm management prioritizes alarms for most critical action. Its low power consumption keeps it always on, always visible, always watching. *smartAIS* transmits all information over WiFi to your PC, or your mobile device for access anywhere on your vessel. Using the WatchMate *smartAIS* app, you can monitor information and control your vessel autopilot, manage alarms and much more, right from your mobile device.

THE *smartAIS* ADVANTAGE

ONLY VESPER MARINE HAS IT!



SAFETY UNDERWAY

Collision Prevention

Continuously determine crossing situations, receive collision alarms with full vessel information for critical action.

SAFETY AT ANCHOR

Anchor Watch

Sleep soundly, knowing you'll be alerted if your anchor is dragging.

SAFETY FOR YOUR CREW

Man Overboard

Be alerted when your crew activate an AIS MOB device and see their current location for easy retrieval.



SAFETY UNDERWAY

***smartAIS* proactively alerts you when you have potential collision situations.**

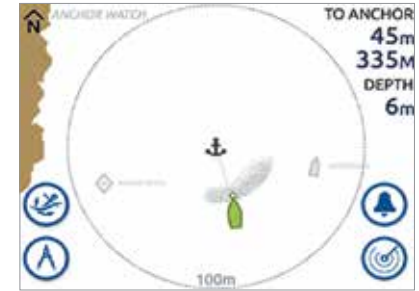
It uses navigation instrument data such as wind, depth, speed, heading, log and temperature, GPS data like position, course and speed, AIS data and smart alert logic to continually determine safety implications and alert you. It computes the closest point of approach and time until the closest point of approach and has critical alarms to warn you of vessels posing a threat. Its smart alarm management organizes alarms for the most critical response. The alarms are always on and do not need any additional interface.

Manage your vessel's navigation or take decisive action from anywhere on-board using your mobile device and the WatchMate *smartAIS* App or any 3rd party navigation software and apps. Control autopilot, customize alarms, change alarm profiles, activate Anchor Watch and much more. You can connect up to 5 other devices such as a tablet, smartphone, PC or Mac simultaneously or it is expandable to unlimited devices with an external WiFi router.

Designed for minimal power consumption, *smartAIS* is always on, always visible and continuously watching.

SAFETY AT ANCHOR

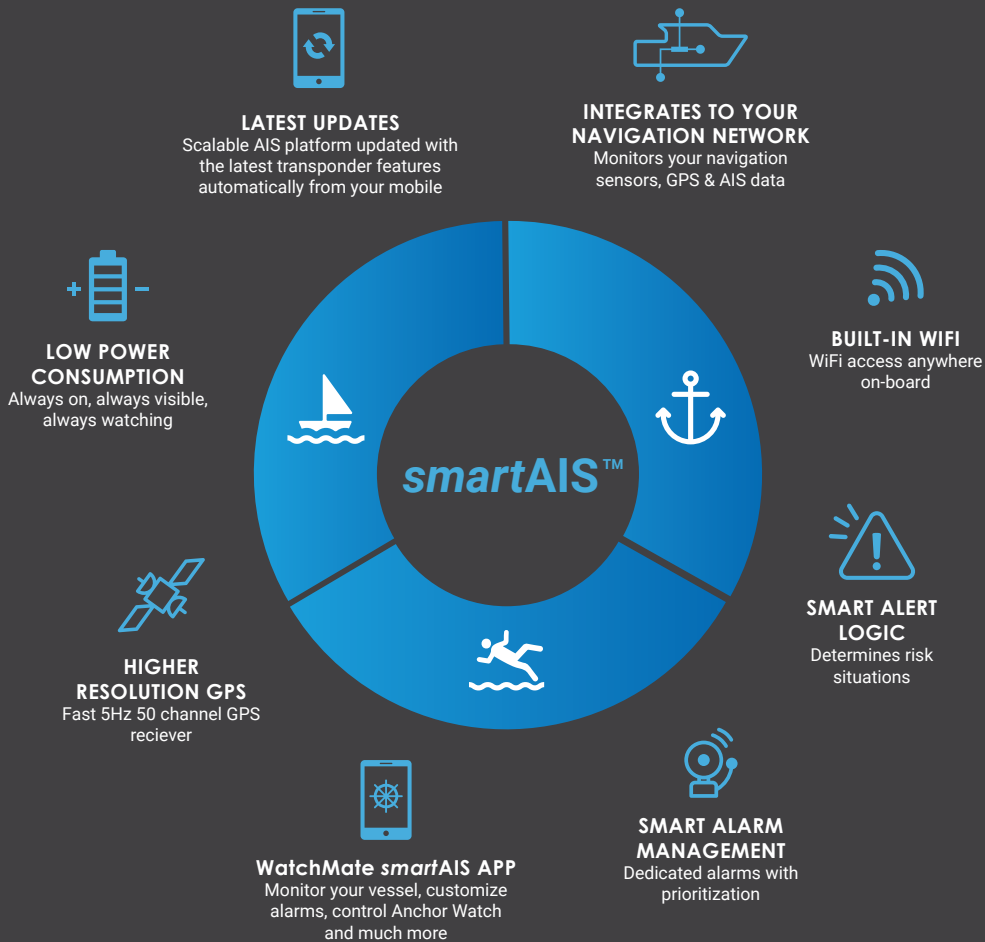
smartAIS plots your position in relation to the anchor and marks your positions over time to determine if you are dragging. The alarm sounds if you drag outside a circular zone configured around your anchor position. Set customized alarms for increased wind speed, wind direction change or minimum water depth. When you drop anchor, activate Anchor Watch using your smartphone or tablet from anywhere on-board. Even if your mobile is powered off or the app is closed, the *smartAIS* Anchor Watch continues to monitor the situation and sound the alarm to warn you. You'll be safer and sleep better because of the dedicated Anchor Watch.



SAFETY FOR YOUR CREW

smartAIS silently and continuously watches for a man overboard (MOB) and sounds the alarm as soon as it detects one. Equip your crew members with any manufacturer's AIS MOB device and when your crew activate it, see their continuously updated location, bearing and range for easy retrieval. *smartAIS* can associate the devices to names of your crew members. When an alarm is triggered, it displays the name of your crew member which is quicker and easier to recognize rather than a string of MMSI numbers.





YOUR *smartAIS* RANGE

WATCHMATE VISION

Get the *smartAIS* advantage of Safety Underway, Safety at Anchor and Safety for your Crew with a fully standalone *smartAIS* transponder, WatchMate Vision. Winner of the NMMA Innovation Award, the WatchMate Vision has a large 5.7" bright color touchscreen with an intuitive interface for easy operation of all transponder functions. It comes with worldwide coastal outlines that determines your location in relation to major land areas. Its intelligent filtering prioritizes and shows only those targets which have a collision risk. It has a built-in GPS antenna with an optional external antenna when a view of the sky is not available. As a standalone transponder, you get complete access to all navigation sensor data, GPS and AIS information and you can also integrate it with your network of chart plotters, MFD's and NMEA instruments.



WATCHMATE XB-8000

It is a full-featured Class B *smartAIS* transponder with all the *smartAIS* functions of Collision Prevention, Anchor Watch and MOB Alarm working actively for the safety of your vessel and crew. It can be viewed on any tablet, smartphone, PC or Mac over WiFi or USB, but is continuously watching and alerting you even when your screen is off. It comes with an alarm and silence switch that can be mounted anywhere on board. It is easy to integrate with your network of chart plotters, MFD's and NMEA instruments. All your navigation instrument data from NMEA 2000 or NMEA 0183 along with GPS and AIS is available on your mobile devices for alarm management and critical action, giving you complete control of every situation.



“

THIS IS A FANTASTIC PIECE OF KIT. THE MENUS ARE SIMPLE AND EASY TO USE, EVEN WHILE IN A HEAVY SEAWAY, IT'S INCREDIBLY SMART ABOUT CONSERVING POWER, AND BEST OF ALL IT HAS THE SMARTEST ALARMS I'VE EVER SEEN ON AN AIS DEVICE.

Daniel Collins, S/V Aletheia, Georgia, USA

THE WATCHMATE VISION IS A TRULY MAGNIFICENT INSTRUMENT WITH INTELLIGENT IN-BUILT SOFTWARE. ONE MAY COMPARE ITS FEATURES TO SOME SORT OF 'ABS FOR A CAR'. NOTHING LESS! IT PROVED TO BE A TRUE 'ANTI-COLLISION' DEVICE. I CONSIDER MYSELF A HAPPY OWNER AND FOR THE RECORD, I HAVE NEVER GIVEN SUCH FEEDBACK TO ANYONE YET.

Arie Vermeiden, France

ABOUT VESPER MARINE

Dedicated to marine safety solutions since 2007, Vesper Marine focuses on developing AIS solutions from the ground up. We have launched many innovative products in AIS transponder technology and marine asset protection that have been internationally recognized and have delighted customers the world over. Every Vesper Marine product is designed for performance, reliability and ease of use. Besides product excellence, you will receive outstanding technical support both before and after your purchase.

vespermarine

WatchMate
smartAIS™ Transponders

45 Sale St, Freemans Bay, Auckland, New Zealand
www.vespermarine.com | +64 9 950 4848